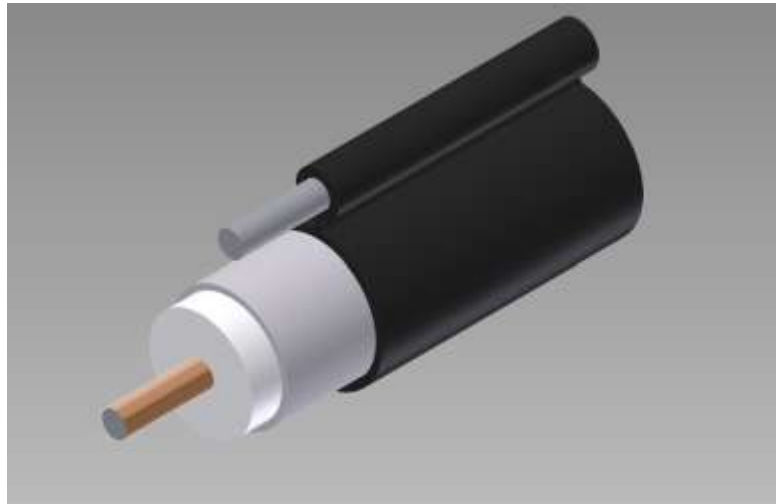


TFC Coaxial Cable Product Information Sheet

Type: TX10540MS / 109 MESS

540 Series Coaxial Cable
 Copper Clad Aluminum Conductor
 Foamed Polyethylene Dielectric
 Seamless Aluminum Tube Outer Conductor
 Medium Density Polyethylene Jacket
 0.109" Galvanized Steel Messenger



Cable Ordering Information

Part Number	Description	NEC / CSA Listing
750540MS00BK007 25E05	TX10540MS / 109 MESS	n/a

Characteristics

Material	Detail	inches	mm
Inner Conductor	Copper Clad Aluminum	0.124	3.15
Dielectric	Foamed Polyethylene	0.513	13.0
Outer Conductor	Seamless Aluminum Tube	0.540	13.7
Floodant	---	---	---
Jacket	Polyethylene, Outdoor, Black	0.610	15.5
Messenger	Galvanized Steel	0.109	2.77
Cable Width	---	0.975	24.8

Mechanical Specifications

Minimum Bend Radius, in. (mm)		4.0	(102)
Product Weight, lbs/kft (kg/km)	(less reel)	137	(204)

Customers are reminded that they are SOLELY responsible for confirming that all products are properly installed and used in accordance with all applicable codes and regulations.

Document: tx10540ms-109mess_1ghz09.doc
 Revision: 7.13.2009
 Page: 1 of 2

uncontrolled copy

All Rights Reserved,
 Specifications subject to change without notice

TFC Coaxial Cable Product Information Sheet
 Type: TX10540MS / 109 MESS

Electrical Specifications		
Impedance, Ω	75 ± 2	
Velocity of Propagation, %	88	
Capacitance, Nominal	15.3 pF/ft	50.0 pF/m
DC Resistance	Ω / kft	Ω / km
Inner Conductor	1.02	3.35
Outer Conductor	0.59	1.94
Loop	1.61	5.29

Notes:

Attenuation, Maximum @ 68 °F (20 °C)		
Frequency, MHz	dB / 100 ft	dB / 100 m
5	0.14	0.46
55	0.47	1.54
211	0.95	3.12
250	1.03	3.38
270	1.07	3.51
300	1.13	3.71
330	1.19	3.90
350	1.23	4.04
400	1.32	4.33
450	1.40	4.59
500	1.49	4.89
550	1.56	5.12
600	1.64	5.38
750	1.85	6.07
870	2.01	6.59
1000	2.17	7.12

Customers are reminded that they are SOLELY responsible for confirming that all products are properly installed and used in accordance with all applicable codes and regulations.

