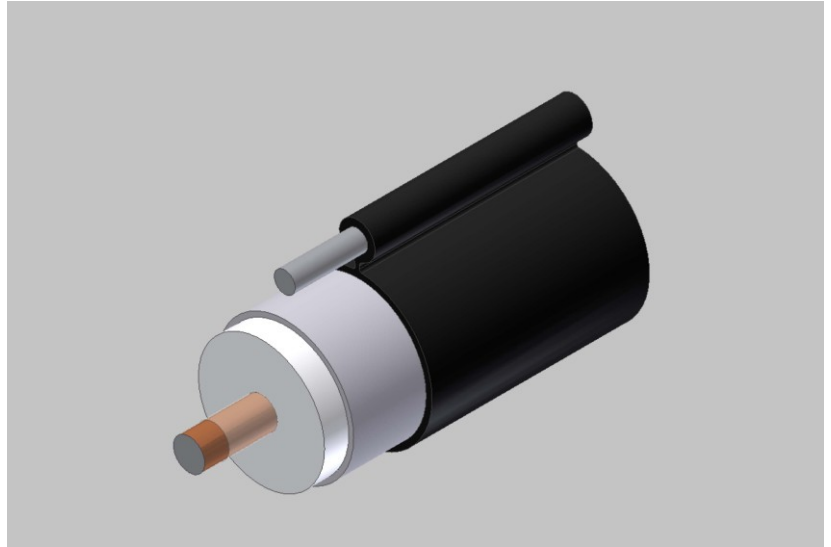


# TFC Coaxial Cable Product Information Sheet

## Type: TX10715MS / 188 MESS

715 Series Coaxial Cable  
 Copper Clad Aluminum Conductor  
 Foamed Polyethylene Dielectric  
 Seamless Aluminum Tube Outer  
 Conductor  
 Medium Density Polyethylene Jacket  
 0.188" Galvanized Steel Messenger



### Cable Ordering Information

Part Number	Description	NEC / CEC Listing
750715MS00BK110 25G05	TX10715MS / 188 MESS	n/a

### Characteristics

Material	Detail	inches	mm
Inner Conductor	Copper Clad Aluminum	0.166	4.22
Dielectric	Foamed Polyethylene	0.686	17.4
Outer Conductor	Seamless Aluminum Tube	0.715	18.2
Floodant	---	---	---
Jacket	Polyethylene, Outdoor, Black	0.785	19.9
Messenger	Galvanized Steel, Stranded	0.188	4.78
Cable Width	---	1.200	30.5

### Mechanical Specifications

Minimum Bend Radius, in. (mm)		5.0	( 127)
Product Weight, lbs/kft (kg/km)	(less reel)	291	( 433)

Customers are reminded that they are SOLELY responsible for confirming that all products are properly installed and used in accordance with all applicable codes and regulations.

Document: tx10715ms-188m\_1ghz10.doc  
 Revision: 9.9.2010  
 Page: 1 of 2

**uncontrolled copy**

All Rights Reserved,  
 Specifications subject to change without notice

