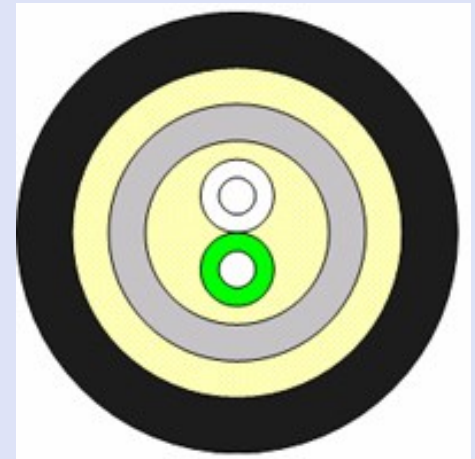
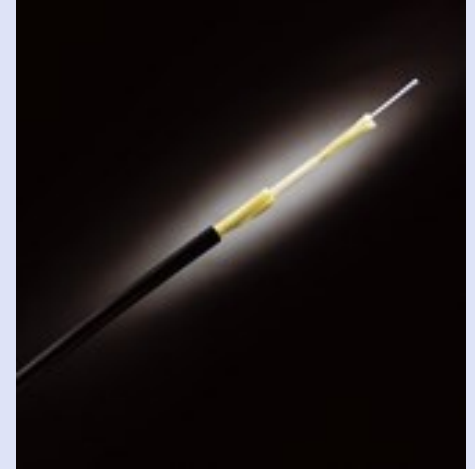




Draka

Draka Comteq | Cable Solutions – EMEA

Tactical field cable solution





DESIGN

- Fibres: Two single-mode fibres with protective plastic coatings. Nominal outer diameter 0.75 mm.
- Fillers: A layer of aramid fibres over the optical fibres.
- Inner sheath: Transparent weather resistant polyurethane sheath. Nominal outer diameter 2.8 mm.
- Strength members: A layer of high tensile strength aramid fibres.
- Outer sheath: Black weather resistant polyurethane sheath.

PROPERTIES

- Tensile strength: 700 N
- Crush strength: 1500 N/10cm
- Impact: 50 x 1.5 Nm
- Operating temperature range: - 40°C ... + 60°C
- Nominal outer diameter: 4.5 mm
- Nominal weight: 17 kg/km



DESIGN

- Fibres: Two multi-mode fibres with protective plastic coatings. Nominal outer diameter 0.75 mm.
- Fillers: A layer of aramid fibres over the optical fibres.
- Inner sheath: Transparent weather resistant polyurethane sheath. Nominal outer diameter 2.8 mm.
- Strength members: A layer of high tensile strength aramid fibres.
- Outer sheath: Black weather resistant polyurethane sheath.

PROPERTIES

- Tensile strength: 700 N
- Crush strength: 1500 N/10cm
- Impact: 50 x 1.5 Nm
- Operating temperature range: - 40°C ... + 60°C
- Nominal outer diameter: 4.5 mm
- Nominal weight: 17 kg/km



DESIGN

- Fibres: Two single-mode fibres with protective plastic coatings. Nominal outer diameter 0.75 mm.
- Fillers: A layer of aramid fibres over the optical fibres.
- Inner sheath: Transparent weather resistant polyurethane sheath. Nominal outer diameter 2.8 mm.
- Strength member: Insulated steel strand, parallel to the optical element.
- Outer sheath: Black weather resistant polyurethane.

PROPERTIES

- Tensile strength: 2000 N
- Crush strength: 5000 N/10cm
- Impact: 50 x 1.5 Nm
- Operating temperature range: - 40°C ... + 60°C
- Nominal outer diameter: 4.5 mm x 7 mm
- Nominal weight: 40 kg/km



Z2FR

Multi mode fibre

Core diameter: 50 μm
Cladding diameter: 125 μm
Primary coating dia.: 250 μm
Secondary coating dia.: 750 μm
Fibre colour green/white

Attenuation

850 nm ≤ 3.0 dB/km

1300 nm ≤ 1.0 dB/km

Bandwidth

850 nm ≥ 400 MHzkm

1300 nm ≥ 600 MHzkm

Proof stress level 1 %

FTMRMU / FTMPMU

Single mode fibre (ITU-T G.652)

Mode field diameter: 8.8 – 9.7 μm
Cladding diameter: 125 μm
Primary coating dia.: 250 μm
Secondary coating dia.: 750 μm
Fibre colour blue/white

Attenuation

1310 nm ≤ 0.43 dB/km

1550 nm ≤ 0.28 dB/km

Chromatic dispersion

1288...1339 nm ≤ 3.5 ps/(nmkm)

1550 nm ≤ 18 ps/(nmkm)

Proof stress level 1 %



Tensile strength

- IEC 60794-1-2, E1
- Tensile force: 700 N
- Length: 50 m
- Time: 5 min

Crush strength

- IEC 60794-1-2, E3
Force: 1.5 kN/100mm
3.0 kN/100mm
Time: 5 min

Torsion

- IEC 60794-1-2, E7
Length: 1000 mm
Load: ≥ 40 N
Turns: ± 3

Impact

- IEC 60794-1-2, E4
- Striking radius: 12.5 mm
- Energy: 1.5 N
- Impacts: 50 (to the same point)

Moisture

100 m of cable on a loose coil is submerged in water for 7 days. Attenuation measurements after 7 days in +20°C, -40°C, +60°C and +20°C

Cold winding

Temperature: -40°C
Length: 100 m
Drum diameter: 100 mm
Number of windings: 300

Vibration, sinusoidal

- IEC 68-2-6, Fc
- 5-500Hz
- max. amplitude: 0.1mm
- max. acceleration: 1.5G
- Time: 3 h

Temperature cycling

IEC 60794-1-2, F1
Length: 100 m
TB: +60°C
TA: -40°C
Number of cycles: 2

Coupling test for connector

200 couplings
Optical measurement after every 20 coupling.



Draka

Draka Comteq | Cable Solutions – EMEA

Tactical field cable reels



BIG REEL

Material: Steel

Diameter: 560 mm

Drum dia: 160 mm

Width: 670 mm

Weight: 23.5 kg

Up to 3 kilometers of cable



SMALL REEL

Material: Aluminium

Diameter: 370 mm

Drum diameter: 100 mm

Width: 430 mm

Weight: 2.9 kg

Up to 800 meters of cable



FEATURES

- Weight: 170 kg
- Turns 360° on its base
- Hydraulic drive for cable reeling. Adjustable tension force.
- Adjustable brake force when laying the cable
- Telescope bar for cable guidance, 1-3 meters
- Adjustable winding mechanism
- Reeling speed up to 10 km/h



Draka

Draka Comteq | Cable Solutions – EMEA

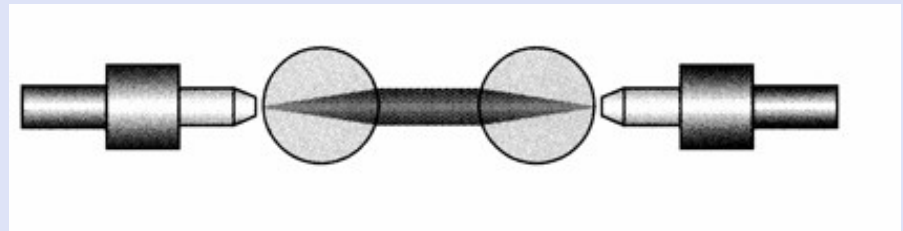
Tactical field cable reeling equipment Backpack





Typical values for single mode expanded beam connectors

<u>Optical loss:</u>	1.5 dB
<u>Return loss:</u>	40 dB
<u>Operating temp.:</u>	- 40 ... + 70°C
<u>Water immersion:</u>	up to 2 m
<u>Vibration, sinusoidal:</u>	10- 500Hz / 0.75 amplitude (10G acceleration)
<u>Free fall:</u>	500 falls onto concrete from 1.2 m height
<u>Bump resistance:</u>	4000 bumps (40G acceleration)





FSM-2x500-EBC/XX

Launch fibres are used in OTDR (Optical Time Domain Reflectometer) measurements for eliminating effect of the dead zone on the test results. For improved handling of the launch fibre in the field, the fibre is packed in a small, rugged aluminium case, in which the connectorised fibre ends are also protected with a hinged cover. Dimensions 300 x 200 x 55 mm. Weight 1,5 kg.

Fibre of the single-mode (SM) or multimode (GK) type. Standard length 500 m of single-mode fibre and 100 m of multimode fibre. Optical switch for multiple channels. No fibre splices. Standard length of the protected fibre ends 2 m.



Cleaning set for expanded beam connectors

FT 705

For cleaning expanded beam connectors. Set consists of cleaning cloths, compressed air and cleaning liquid.



Joint box for tactical field cables

XOK 202

For jointing tactical field cables. Plastic box with capacity for six fibre joints. Box is reusable.